

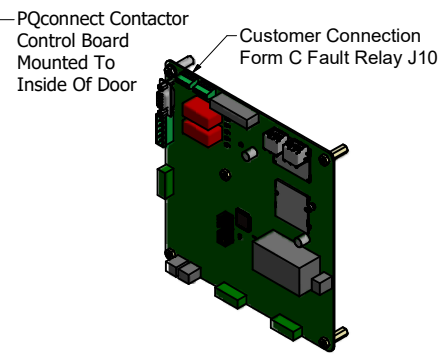
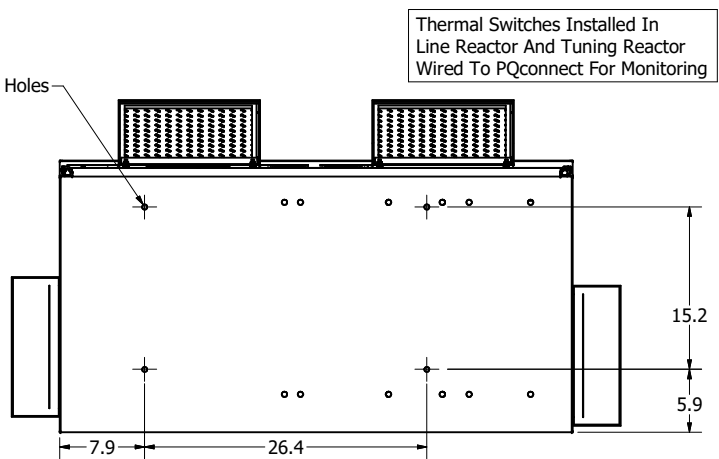
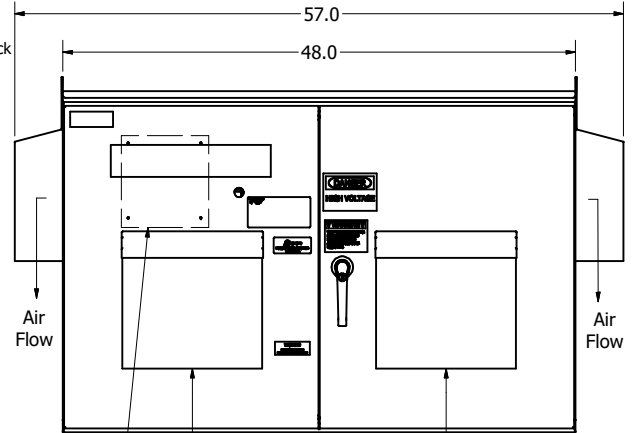
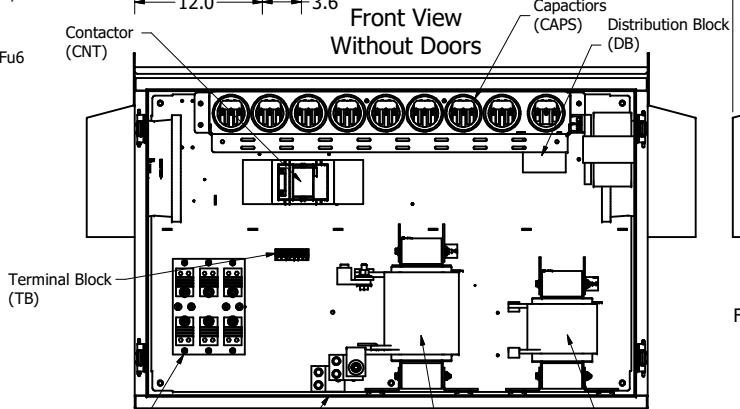
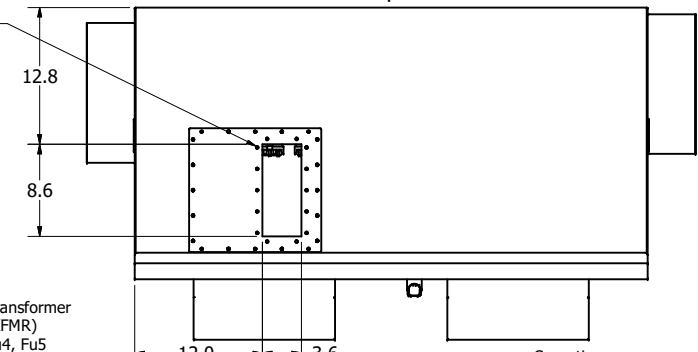
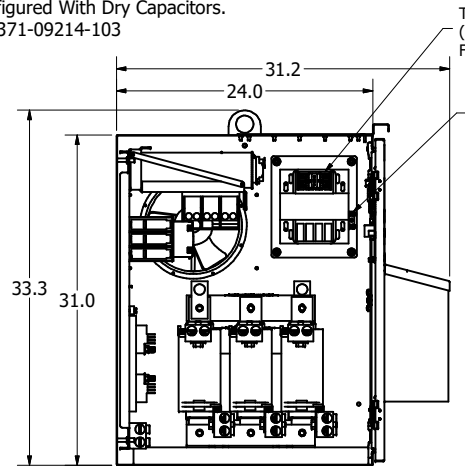
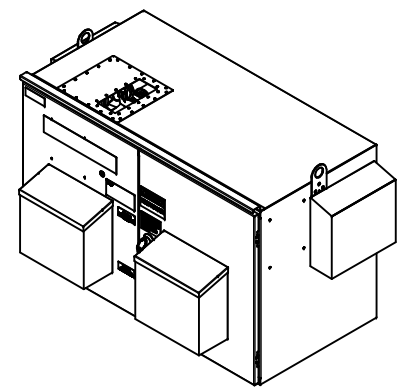
GROUND LUG:
 WIRE RANGE - TWO 600MCM-2
 TIGHTENING TORQUE 500 IN-LB.

CUSTOMER CONNECTIONS:
 WIRE RANGE - TWO 600MCM-2
 TIGHTENING TORQUE 500 IN-LB.

- Notes:**
1. Customer is responsible for installation to meet all national and local electrical codes.
 2. Use only hubs or fittings that comply with UL514B for type 3R enclosures.
 3. Approx. WT LBS : 850
 4. Enclosure Color: RAL 7006 Beige Grey.
 5. Filter Configured With Dry Capacitors.
 6. JCI P/N: 371-09214-103

UNIT SPECIFICATIONS						
KW	VOLT	PHASE	HZ	HARMONIC	KVAR	AMPS
250	380-415	3	50	5TH	102	470

SCHEMATIC : 31582 **Top View**



THE INFORMATION AND DESIGNS CONTAINED IN THIS DRAWING ARE CONFIDENTIAL AND THE PROPRIETARY PROPERTY OF ALLIED MOTION TECHNOLOGIES INC. AND ITS SUBSIDIARIES. NEITHER THIS DESIGN NOR ANY INFORMATION CONTAINED IN THIS DRAWING MAY BE REPRODUCED OR DISCLOSED TO OTHERS WITHOUT THE EXPRESS WRITTEN CONSENT OF ALLIED MOTION TECHNOLOGIES INC. AND ITS SUBSIDIARIES.				TOLERANCES (EXCEPT AS NOTED)				 W132N10611 (Rev 19) Feb Germantown, WI 53022 © 2022 TCI, LLC			
E	4839 Updated CNT	01/26/22	JRN	DECIMAL	.XX ± .25	.XXX ± .10	250kW, 380-415/3/50, Type 3R, JCI, PQconnect Harmonic Guard Passive	DIV. BY: JRN DATE: 12/10/19 SCALE: 1/9 SHEET: 1 OF 1	108200DG	1	
D	5476 Corrected kVar	12/17/20	JRN	FRACTIONAL	± 1/16						
C	5439 Updated Rainhoods	10/29/20	JRN	ANGULAR	± 1°						
B	Fixed Amps	06/30/20	JRN								
A	As Designed	12/10/19	JRN								
NO	REVISION	DATE	BY								